

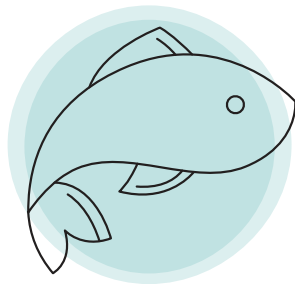
# Innovasea Enables Earth Ocean Farms to Expand Production with Rugged Evolution Pens

Mexico's Earth Ocean Farms is a dynamic producer of totoaba and pacific red snapper and is focused on growth that is sustainable for the environment. To expand production the company called on Innovasea to design and build a durable aquaculture solution with minimal environmental impact that can survive frequent hurricanes.

## Challenge

In the Bay of La Paz, seas are relatively calm eight months a year. But in the winter El Norte weather systems pack strong winds and currents. Earth Ocean Farms needed fish pens that were durable and flexible enough to adapt to varying conditions – and keep out sea lions and other predators.

In addition, the whole system needed to operate without making a significant impact on the surrounding environment.



## Solution

To enable EOF to utilize its offshore site, Innovasea designed the Evolution Pen, a new open ocean aquaculture system that's operated at the surface in normal conditions but capable of being submerged to a safer depth when bad weather strikes.

When the pen is at sea level it is run like a traditional surface pen, making it easy for experienced operators to manage. When submerged, operations are able to continue as normal, reducing stress on the fish.

The pen also features copper alloy mesh netting, the toughest netting on the market, which keeps out predators and stays naturally clean.



**"Being able to submerge the pens during a hurricane lets me sleep at night and reduces the risks to our valuable stock."**

– Pablo Konietzko, Director of Earth Ocean Farms

## Result

- » Innovasea's **rugged, submersible Evolution Pens** enabled Earth Ocean Farms to move further from shore, providing numerous health and ecological benefits for their fish.
- » Durable, predator-resistant brass alloy mesh netting protects fish from predators and parasites.
- » Moving to deeper waters minimized environmental and aesthetic impacts.
- » Earth Ocean Farms was able to expand its footprint, capacity and business.

Learn more at [www.innovasea.com](http://www.innovasea.com).

### About Innovasea

Innovasea designs the world's most technologically advanced aquatic solutions for fish tracking and fish farming – and builds them to withstand the toughest conditions. We partner with customers to fully understand their needs and solve their most pressing challenges. It's all driven by a commitment to make our ocean and freshwater ecosystems sustainable for future generations. Today. Tomorrow. For life.